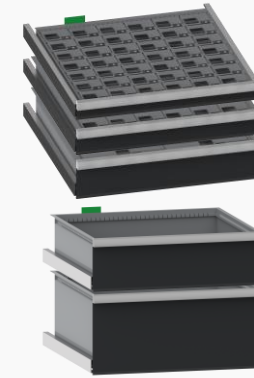
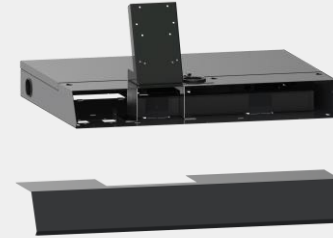


CONFIGURATION OF LEC CABINET

Basis Unit



Extension Unit



1.

Lista-Units

First select the cabinet width
36x36E (717x725 mm) or
54x36E (1023x725 mm)

2.

Housing

Select the cabinet height
700 mm, 850 mm, 1000 mm,
1150 mm, 1450 mm

3.

Energy Panel

Monitor stand with
front cover or energy
panel conduit

4.

Drawers

Select the drawer type
and height
Lista Drawer Control - LDC
or
Lista Parts Control - LPC

5.

Accessorie

Accessories

1 Cabinet



Basis Unit



Power Cord (country-specific)

89.496.000
89.497.000
89.498.000

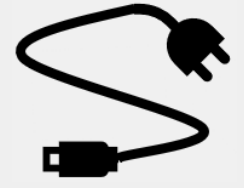
More than 1 Cabinet



Basis Unit



Extension Unit



Power Cord (country-specific)

Interlinking kit 1.5m between basis and extension unit is included by conduit of extension unit

89.496.000
89.497.000
89.498.000

LISTA PC + Monitor

LISTA PC + Customer's Monitor or

LISTA Monitor + Customer's PC

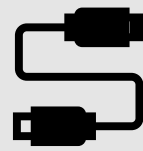


Basis Unit



Power Cord (country-specific)

89.496.000
89.497.000
89.498.000



Connection Cable C13/C5

12.705.000
12.708.000
12.719.000
12.720.000



Basis Unit

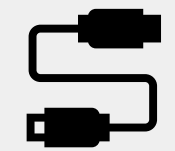


Extension Unit



Power Cord (country-specific)

89.496.000
89.497.000
89.498.000



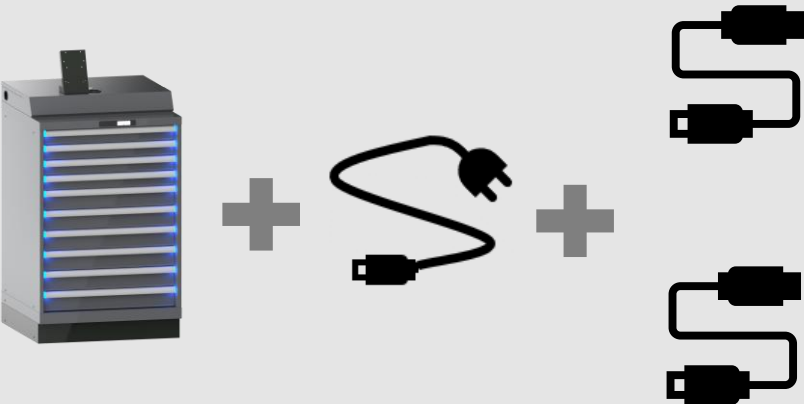
Connection Cable C13/C5

12.705.000
12.708.000
12.719.000
12.720.000

Interlinking kit 1.5m between basis and extension unit is included by conduit of extension unit

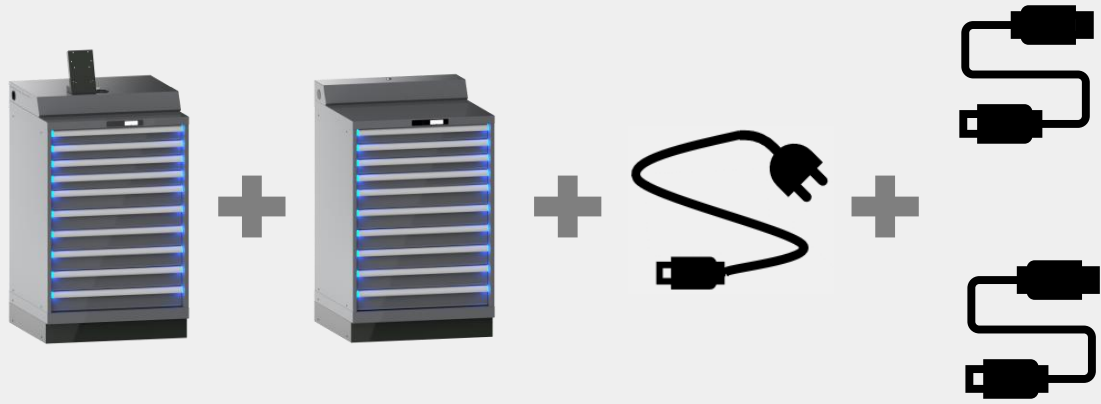
Customer's PC +
Customer's Monitor

1 Cabinet



Basis Unit	Power Cord (country-specific)	Connection Cable C13/C5
	89.496.000	12.705.000
	89.497.000	12.708.000
	89.498.000	12.719.000
		12.720.000

More than 1 Cabinet



Basis Unit	Extension Unit	Power Cord (country-specific)	Connection Cable C13/C5
		89.496.000	12.705.000
		89.497.000	12.708.000
		89.498.000	12.719.000
			12.720.000

Interlinking kit 1.5m between basis and extension unit is included by conduit of extension unit